

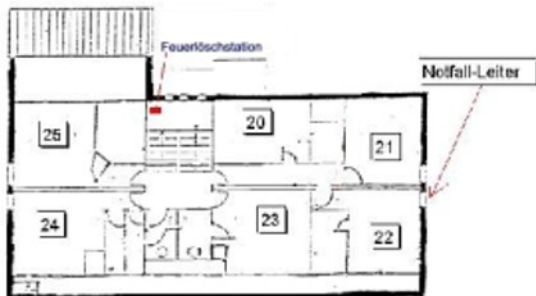


1. OBERGESCHOSS



- Zi 10 DZ, WC/DU, TV, TEL
- Zi 11 DZ, WC/DU, TV, TEL
- Zi 12 ZZ, WC/DU, TV, TEL
- Zi 14 4er, WC/DU, TV, TEL
- Zi 15 EZ, WC/DU, TV, TEL
- Zi 16 DZ, WC/DU, TV, TEL
- Zi 17 ZZ, WC/DU, TV, TEL
- Zi 18/19 3er, WC/DU, TV, TEL

2. OBERGESCHOSS



- Zi 20 ZZ, fl. Wasser
- Zi 21 DZ, WC/DU, TV, TEL
- Zi 22 DZ, WC/DU, TV, TEL
- Zi 23 DZ, WC/DU, TV, TEL
- Zi 24 DZ, WC/DU, TV, TEL
- Zi 25 DZ, WC/DU, TV, TEL

